

**WAVE-CUT**

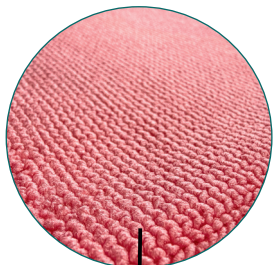
Shape-retaining and longer-lasting than conventional binding tapes, thanks to modern heat-cut technology.

**THE PROVEN MICROFIBER CLOTH – NOW EVEN MORE POWERFUL WITH INNOVATIVE SUPERPOL FIBER**



**SPECIFICATIONS**

- yarn blend:** 80% Polyester  
20% Polyamide
- colour:** BLUE, GREEN, YELLOW, PINK, GREY
- washing label:** Satin-Label in WHITE
- size:** **38x38 cm**
- weight:** ca. 48 g/cloth
- units:** 20 x 10 = 200 pieces
- item-no.:** ASPL3838BL ●  
ASPL3838GR ●  
ASPL3838GE ●  
ASPL3838RO ●  
ASPL3838GU ●



**INNOVATIVE SUPERPOL-FIBER**

**PROPERTIES**

The proven **SUPER-LINE 300** microfiber cloth sets new standards in cleaning performance: featuring innovative Superpol fiber and advanced material technology, it delivers even higher cleaning efficiency and exceptional durability. Thanks to hot-cut technology (wave cut), the cloth has particularly clean and durable edges and retains its shape even under intensive use. As a **premium microfiber cloth** specially developed for the healthcare sector, the SUPER-LINE meets the highest standards of quality and hygiene. The innovative microfiber hot-cut technology also ensures **uniform preparation** of the cloths. For this reason, the SUPER-LINE 300 premium microfiber cloth is deliberately manufactured without an overlock edge.

- Very high water absorption
- Suitable for almost all surfaces
- Streak-free cleaning results
- Lint-free and shape-retaining
- Exceptionally durable thanks to ultrasonic-cut edges
- Uniform preparation of the cloths

**APPLICATION**

The cloth can be used both dry and wet.

**APPLICATION AREA**

It is ideally suited for daily maintenance cleaning and can be used on virtually all surfaces. Especially suitable for use in public facilities, hospitals, old people's and nursing homes, airports, shopping centres, hotels, restaurants, pubs and office buildings.

**WASHING RECOMMENDATION**

A washing temperature of 60 °C is recommended. A maximum washing temperature of 95 °C should not be exceeded. The use of fabric softeners and bleaching agents should be avoided. In general, it is recommended to wash only one type.



**Do not use fabric softener & bleach**  
Wash according to type

