

ARCORA[®]

www.arcora-group.com

ARCORA 380BM/25L (BATTERY TYPE)

Manual of Walk-Behind Floor Scrubber Machine



Please read this manual carefully before use

1.0 Summary



Attention: Please read this manual carefully before operating the 380BM/25L floor scrubber

Introduction

380BM/25L folding automatic floor scrubber is a machine that uses a disc brush for mechanical movement and chemical action with water and cleaning solution. It can be used to clean hard floors with various stains, and collect the removed stains and cleaning solution that has not been absorbed by the floor during the cleaning process.

Range of application

The scientific name of this machine is a folding fully automatic floor scrubber and dryer. Suitable for fast mechanized floor cleaning in small office buildings, hotels, restaurants, and factory workshops, making cleaning operations more efficient and efficient.

This device is not suitable for use in rain or placed under a water gun. It is strictly prohibited to use this device to collect hazardous dust or flammable liquids in flammable and explosive environments. Additionally, this device is not suitable for use as a transportation vehicle.

2.0 Overview of Safety Matters



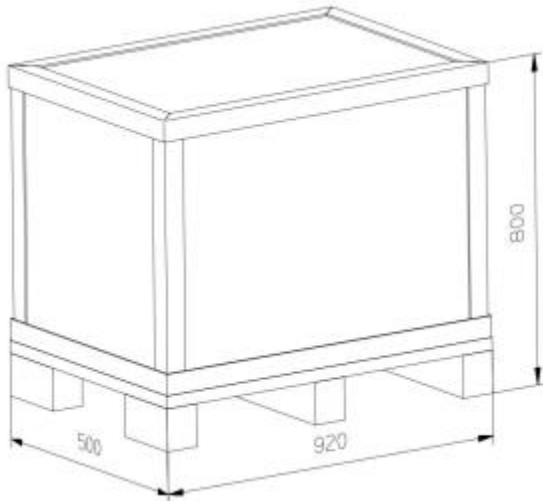
Attention: Operators are advised to carefully read this manual

- Before starting any work, be sure to familiarize yourself with all the designs, control methods, and functions of the floor scrubber.
- When using the floor scrubber for the first time, the operator should place it in an open area to understand its various functions.
- Before starting any operational work, check the general and operational status of the floor scrubber and its components.
- The operator must use the floor scrubber for the appropriate application area (cleaning hard floors) when operating it.
- Pay attention to obstacles in the workplace, such as stairs, shelves, etc., and pay attention to the surrounding crowd, especially children, when operating.
- Use appropriate cleaning agents (when using cleaning agents for floor scrubbers, only follow the instructions of the cleaning agent manufacturer, use the cleaning agent according to the appropriate dosage and limit requirements.
- Only personnel who have received appropriate training can use suitable tools to maintain and repair this floor scrubber.

- When cleaning or maintaining this floor scrubber, turn off the power or remove the battery.
- Do not use high-pressure water or steam equipment to clean this floor scrubber.

3.0 Technical Parameter

Item	Parameters
Rated voltage	DC24V
Working width	405mm
Water absorption width	560mm
Work efficiency	1500m ² /h
Brush	380mm
Disc brush rotation rate	180rpm
Disc brush motor	380W
Disc brush pressure	28kg
Water absorbing motor	500W
Vacuum degree	180mbar
Turning radius	500mm
Clean water tank capacity	20L
Sewage tank capacity	25L
Noise level	65dB
Battery pack	2×DC12V 53Ah
Battery weight	25 kg
Machine weight (including battery)	75kg



4.0 Machine packaging

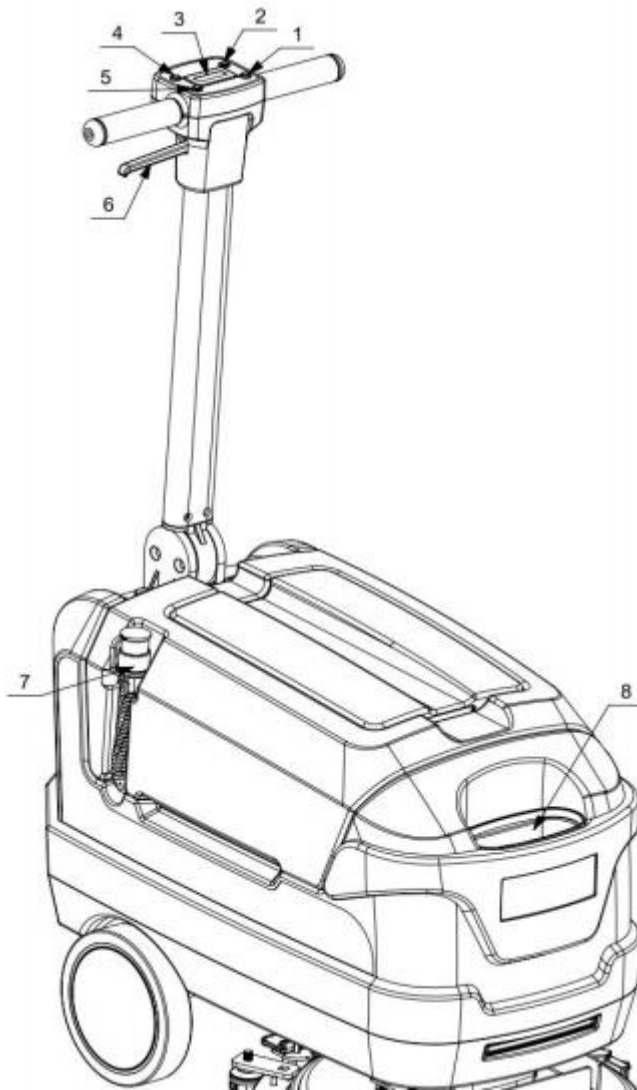
This device adopts specific packaging and has wooden pallets for easy forklift loading and unloading.

The packaging dimensions are as follows:

Long: 900mm

Wide: 480mm

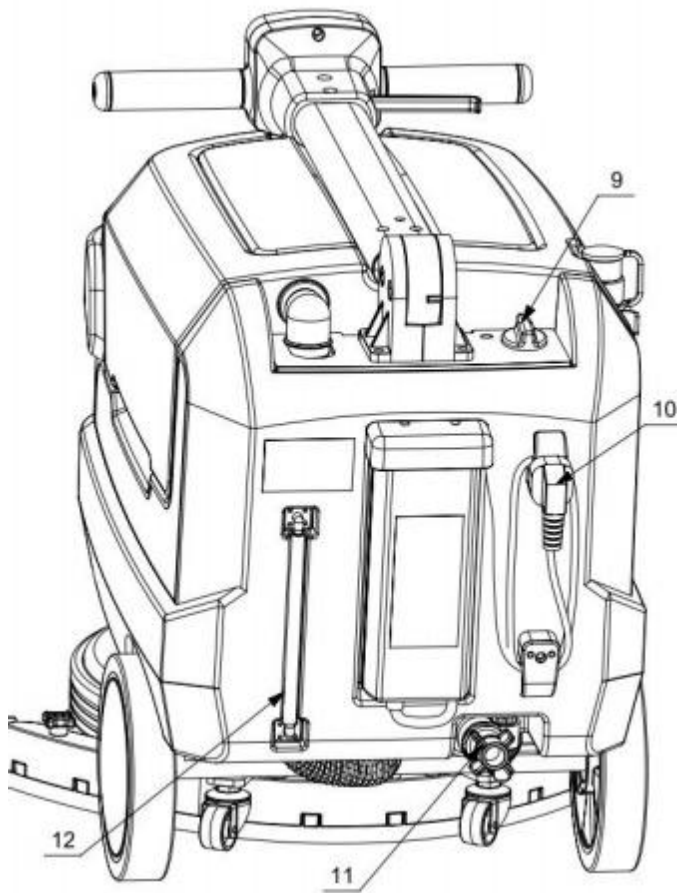
High: 800mm



5.0 Instructions

5-1:

- 1 . Power switch
- 2 . Clear water switch
- 3 . Electricity meter
- 4 . Water absorption switch
- 5 . Brush disk switch
- 6 . Angle controller grip - When pulled up, the handle angle can be adjusted, and when released, it can be positioned at a certain angle.
- 7 . Sewage pipe
- 8 . Clean water inlet

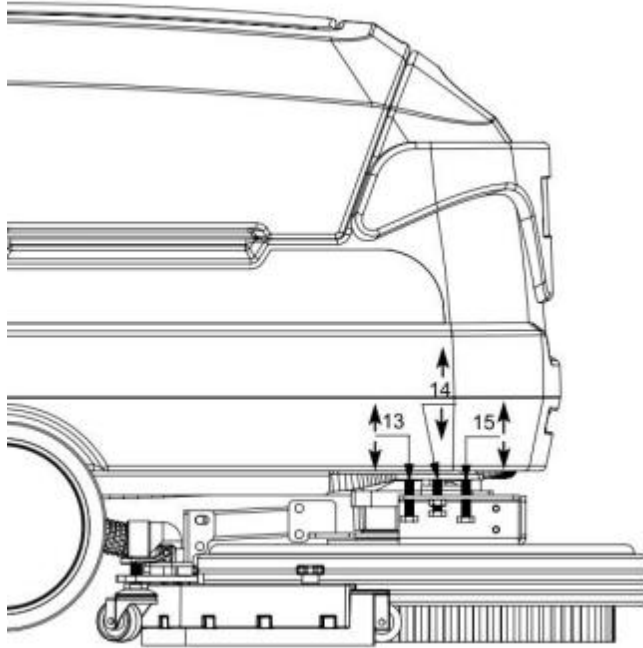


5-2:

- 9 . Water adjustment knob
- 10 . Charging plug
- 11 . Clean water drain plug
- 12 . Clean water capacity gauge

5-3:

13 、 15 Balance adjustment screws - when the machine is working, there is a more obvious deviation to the left or right. For example, when the use of the new brush bristles is about 1/4, the machine will run to the right, at this time, the 15th screw should be properly loosened, and then the corresponding tightening of the 13th screw until the balance. Reverse



adjustment is necessary when changing a new brush.

14 plate adjustment screws - when the machine is working, it is more difficult to push forward or run forward too fast.

6.0 Maintaining

1、 Daily maintenance and maintenance

- (1) Remove needle holder/brush tray and wipe clean with specific cleaner.
- (2) Drain the water in the sewage tank and the clean water tank, and rinse it with clean water. Check the sewage tank for debris and remove it immediately.
- (3) Lift the wiper assembly off the floor and test the wiper strip with a damp towel.
- (4) Remove the vacuum suction filter device and rinse with water.
- (5) Wipe the machine clean with a specific cleaning agent.
- (6) Charge the battery.
- (7) Check whether the edge of the scraper is sharp. If it is damaged, please turn it around or replace it.

2、 Monthly maintenance and maintenance

- (1) Check that the top of the battery is clean to prevent corrosion.
- (2) Check whether the battery cable is loose or corroded.
- (3) Check the seal strip of the sewage tank cover and replace it if it is damaged.
- (4) Lubricate all lubricated parts and shafts with a specific lubricant.
- (5) Check whether the fasteners of the machine are loose.
- (6) Check the water tank for leaks.

3、 Motor maintenance

- (1) Motor maintenance please contact the manufacturer of automatic floor washing machine.
- (2) The motor carbon brush should be checked after every 250 hours of use. If the carbon brush is seriously worn, contact the manufacturer to replace it.

4、 Battery maintenance

- (1) Please follow the battery charging chapter in each manufacturer's operating manual for maintenance.
- (2) The top of the battery and the electrode must be corrosion resistant, can be used soda water corrosion resistant, then do not put this solution into the battery.
- (3) Use a brush dipped in soda water to wipe the battery and the part of the battery cable.
- (4) Regularly check whether the battery cable is worn and whether the contact is loose, and replace it if necessary.

5、 Machine storage

- (1) Store indoors in a dry place.

- (2) Store upright.
- (3) Lift the brush tray off the ground.
- (4) Lift the wiper assembly off the ground.
- (5) If the storage place is extremely cold, it is necessary to keep the machine completely dry before storing it to avoid damage caused by low temperatures.
- (6) Drain the sewage tank and clean the water tank.

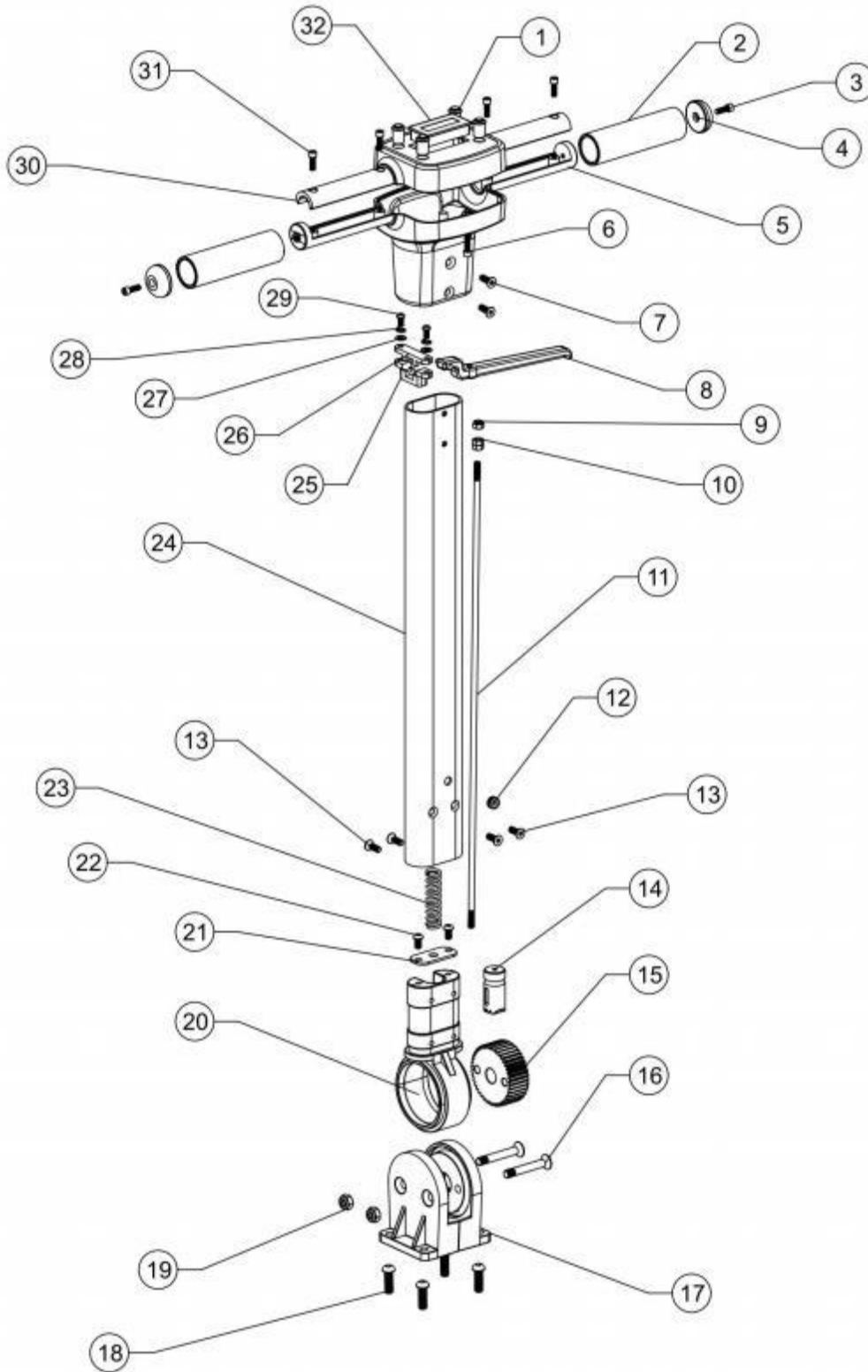
7.0 Common faults and troubleshooting methods

Malfunction	Analysis of causes	Solution
Machine failure	The power switch is not turned on	Please turn on the power switch
	The battery is low and needs to be charged	Charge
	Battery damage	Replacing battery
	Battery cable is loose	Tighten wiring
	The fuse blew	Change the fuse
	Power switch damaged	Contact the manufacturer
The brush motor does not operate	Battery is low and needs to be charged	Charge
	Brush motor is damaged or its wiring is damaged	Contact the manufacturer
	Brush plate motor carbon brush wear seriously	Contact the manufacturer
	Electromagnetic switch failure	Contact the manufacturer
	Controller failure	Contact the manufacturer
	The drive motor or its wiring is damaged	Contact the manufacturer
Suction pump cannot operate	Suction pump overload fuse is blown	Change the fuse
	The suction pump or its circuit is damaged	Contact the manufacturer
	Suction pump carbon brush wear serious	Contact the manufacturer
Little or no solution flow	The ball valve is open too small or closed	Regulating flow switch
	The flow switch is turned on too small or off	Regulating flow switch
	Solution hose or filter blocked	Rinse the pipe or filter with clean water

	The discharge solenoid valve is blocked	Disassemble the discharge solenoid valve and clean it
Poor water absorption	Sewage tank full	Drain the sewage tank
	Drain pipe plug loose	Tighten the drain pipe plug
	The float filter device is blocked	Rinse the float filter
	Squeegee assembly is blocked	Clean squeegee assembly
	Squeegee strip wear	Transfer to use or replace
	Squeegee position is incorrect	Adjust the height of the squeegee to the ground
	The suction pipe is not reliably connected to the squeegee assembly	Reliable connection of suction pipe
	Blockage of suction pipe	Remove blockages
	Suction pipe failure	Replacement of suction pipe
	The cover of the sewage tank is not properly closed	Cover the sewage tank
	Seal strip for sewage tank cover	Replace seal
	The suction pump is damaged	Contact the manufacturer
Short run time	The battery is low	Charge
	The battery has been damaged	Replacing battery
	The battery needs maintenance	Check battery maintenance
	Battery charger is damaged	Repair or replace the charger

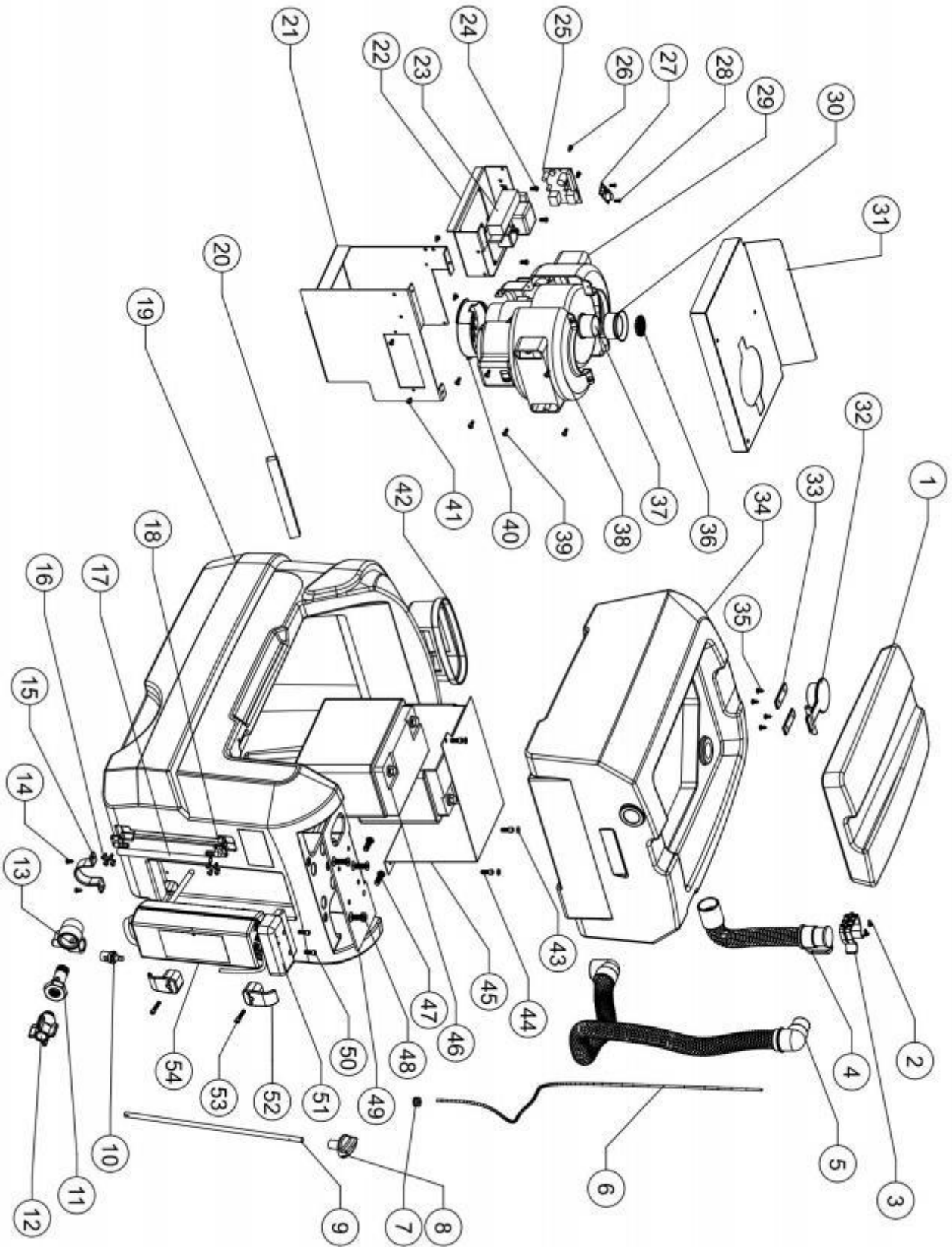
8.0 Explosion diagram

Explosion diagram A



Number	Name	Quantity	Place order number	Materials	Remark
101	Switch button	4			
102	Handle sleeve	2			
103	M5×15 Hexagon socket screw	2			
104	Handle end cover	2			
105	Lower handle casing	1			
106	M5X25 Cylindrical head hex socket screws	1			
107	M6X16 Hex socket countersunk head screws	2			
108	Angle grab rod	1			
109	M6 Lock nut	1			
110	M6 nut	2			
111	Needle tooth screw	1			
112	Wire sealing ring	1			
113	M6X16 Hex socket countersunk head screws	4			
114	Angle needle teeth	1			
115	Angle gear	1			
116	M8X55 Countersunk head screw	2			
117	Angle seat	1			
118	M8X25 Half round head screws	4			
119	M8 Lock nut	2			
120	Angle gauge	1			
121	Angler spring press	1			
122	M6X15 Round head screw	2			
123	16_2.5_60 spring	1			
124	Aluminium tube	1			
125	Gripper locates the lower part	1			
126	Gripper position upper piece	1			
127	5X14 meson	2			
128	M6 Spring washer	2			
129	M5X20 Pan head screw	2			
130	Handle shell	1			
131	M5X20 Cylindrical head hex socket screws	4			
132	Electric quantity display	1			

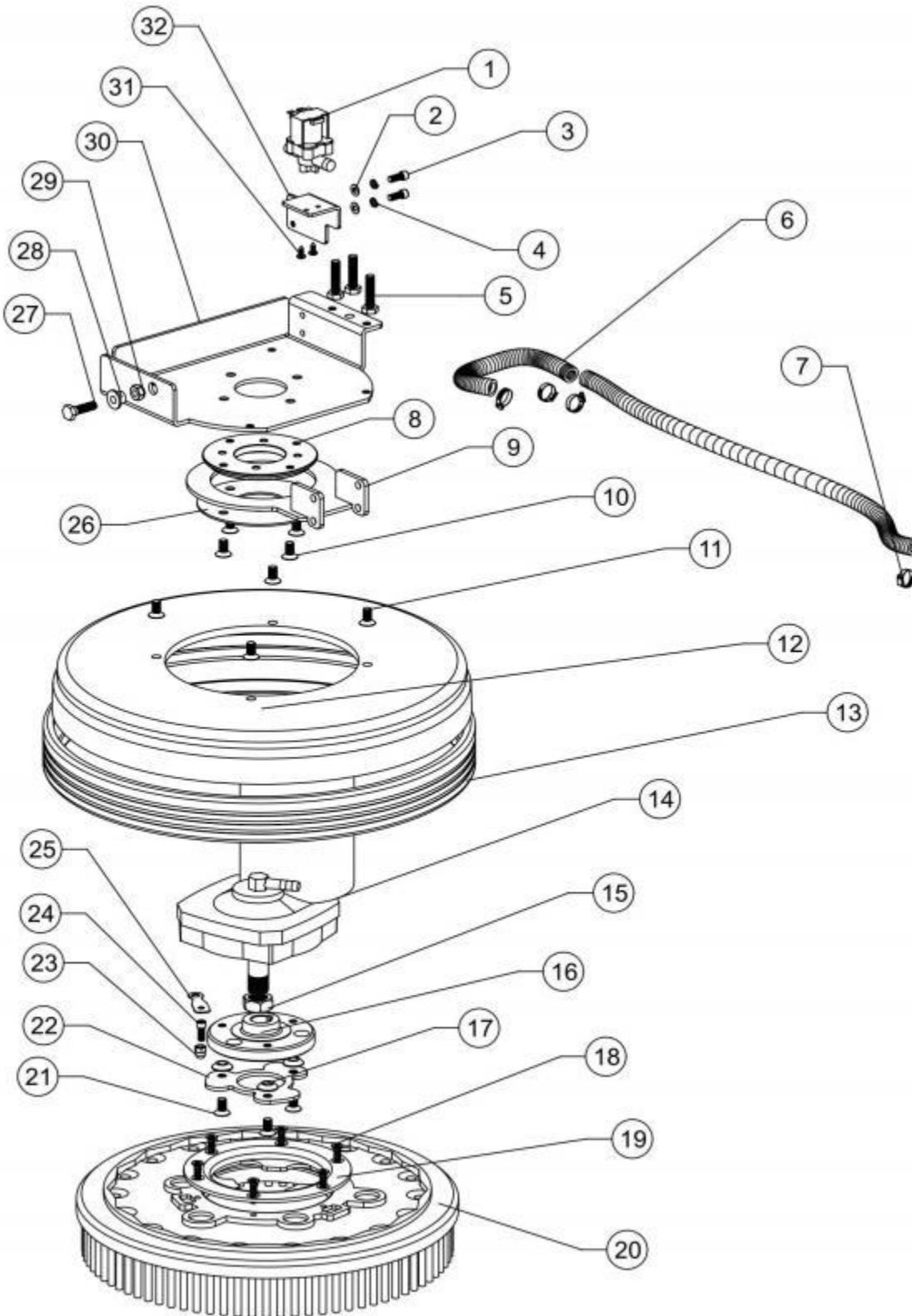
Explosion diagram B



Number	Name	Quantity	Place order number	Materials	Remark
201	Tank cover	1			
202	M4×10 Self-tapping screw	2			
203	Hose fastener	1			
204	Sewage pipe	1			
205	Suction pipe	1			
206	Electric wire	1			
207	Wire sealing ring	1			
208	Water indicator	1			
209	Draw-off boom	1			
210	Water valve core	1			
211	Water valve fastener	1			
212	Water valve filter element	1			
213	Water valve housing	1			
214	M4×10 Self-tapping screw	2			
215	Stainless steel pipe code	1			
216	M4×10 Self-tapping screw	8			
217	12X8 Transparent rubber hose	1			
218	Water gauge spout	2			
219	Clear water tank	1			
220	LED light	1			
221	Suction motor bracket	1			
222	Relay mounting frame	1			
223	380 Relay	1			
224	M5×10 Pan head screw	4			
225	Circuit board	1			
226	M4×8 Pan head screw	2			
227	LED light transformer	1			
228	M3×8 Pan head screw	2			
229	In front of the motor silencer box	1			
230	Suction motor seal ring	1			
231	Water baffle	1			
232	Floating cover	1			
233	Floating cover batten	2			
234	Sewage tank	1			
235	M4×10 Self-tapping screw	4			
236	Water suction motor port grid	1			
237	Suction motor	1			
238	After the motor silencer box	1			
239	M4×15 Self-tapping screw	6			
240	Dust cover	1			

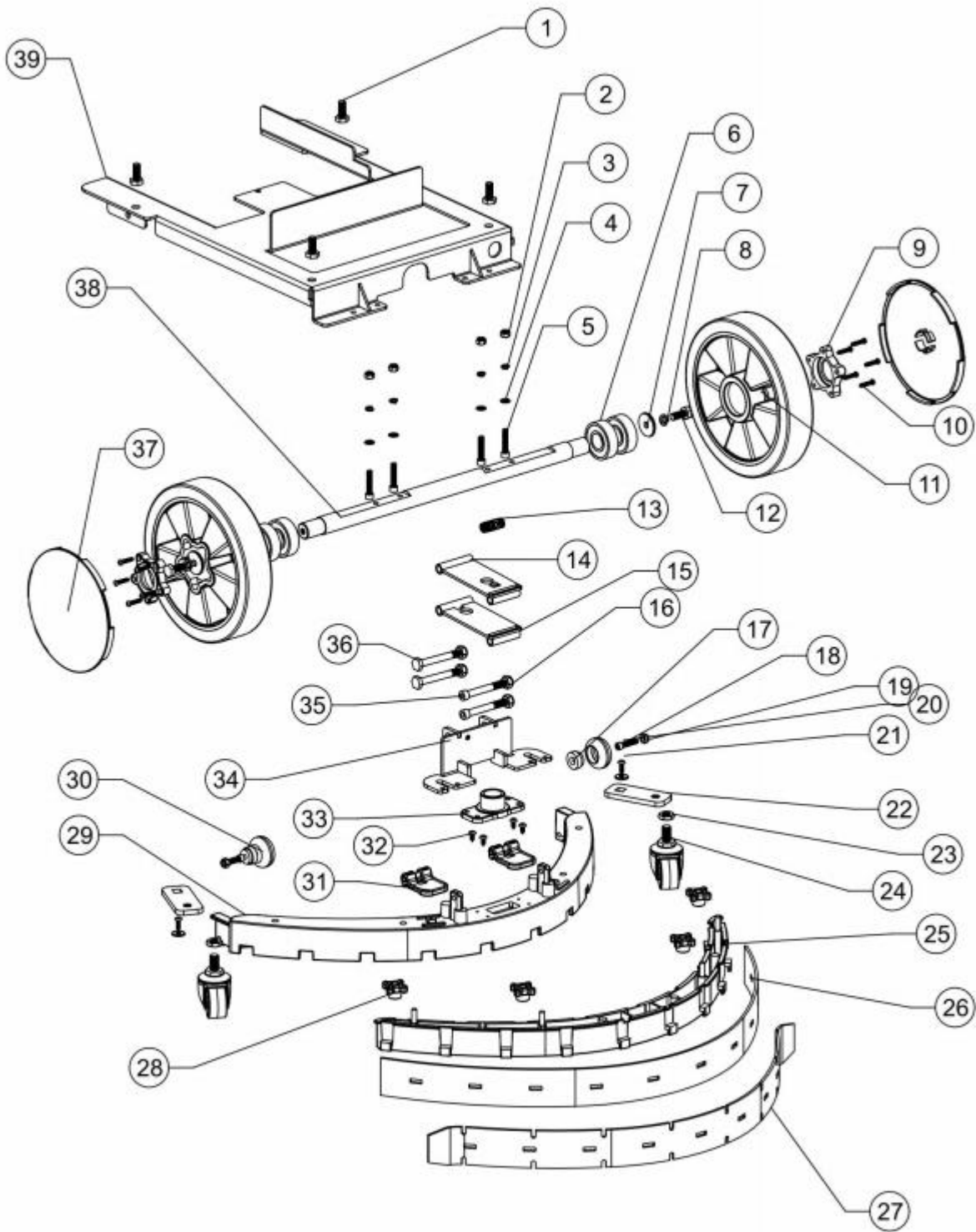
241	M4×10 Self-tapping screw	4			
242	Filter hood	1			
243	5X14 meson	3			
244	M6X15 Hexagon socket screw	3			
245	Battery board	1			
246	Battery board	2			
247	M8X25 Half round head screws	2			
248	M8X25 Countersunk head screw	3			
249	Angle seat connecting plate	1			
250	M5X20 Cylindrical head hex socket screws	2			
251	Charger waterproof cover	1			
252	Wire hook	2			
253	M5X25 Cylindrical head hex socket screws	2			
254	Charger	1			

Explosion diagram C



Number	Name	Quantity	Place order number	Materials	Remark
301	Solenoid valve	1			
302	Mesons are 12 outside and 6 inside	2			
303	M6×15 Cup head screw	2			
304	M6 Spring washer	2			
305	Balance adjusting screw	3			
306	Clean pipe	1			
307	10-20 Hose clamp	4			
308	Swing plate positioning piece	1			
309	Squeegee swing board	1			
310	M8×15 Countersunk head screw	4			
311	M8×15 Countersunk head screw	4			
312	Brush cover	1			
313	Disk anti-collision ring	1			
314	Brush motor	1			
315	M20×1.5 nut	1			
316	Drive buckle	1			
317	Drive button pad	3			
318	6.4×20 Countersunk head screw	1			
319	Brush buckle	1			
320	Brush	1			
321	M8×15 Countersunk head screw	3			
322	Drive buckle three blades	1			
323	M6 Round nut	1			
324	M6×15 Cup head screw	1			
325	Brush button spring plate	1			
326	Oscillating plate gasket	1			
327	M8×30 Outer hexagonal screw	1			
328	Lifting frame copper shaft sleeve	1			
329	M8 Lock nut	1			
330	Brush motor bracket	1			
331	M4×10 Self-tapping screw	2			
332	Solenoid valve fastener _ Sheet metal _	1			

Explosion diagram D



Number	Name	Quantity	Place order number	Materials	Remark
401	M8X25 Outer hexagonal screw	4			
402	M6 Lock nut	4			
403	M6 Spring washer	4			
404	Mesons are 12 outside and 6 inside	4			
405	M6X30 Hexagon socket screw	4			
406	6204 bearing	4			
407	M8X30 meson	2			
408	M8 Spring washer	2			
409	Bearing cap	2			
410	4X20 Self-tapping screw	2			
411	8 inch wheel	4			
412	M8X25 Outer hexagonal screw	1			
413	Water claw return spring	2			
414	Squeegee lift plate _ on	4			
415	Squeegee lift plate _ down _	1			
416	M8 Lock nut	1			
417	Squeegee wheel shaft sleeve	6			
418	M6X25 Hexagon socket screw	1			
419	M6 Lock nut	1			
420	M4_15 Self-tapping screw	1			
421	Meson outside 16 inside 6	1			
422	Squeegee wheel support plate	3			
423	M10 nut	1			
424	Squeegee wheel	1			
425	Squeegee internals	1			
426	Squeegee rear rubber strip	1			
427	Squeegee front rubber strip	1			
428	M6 Star nut	4			
429	Squeegee shell	1			
430	1.5 inch wheel	2			
431	Squeegee grab kneel lock	2			
432	M4×10 Self-tapping screw	4			
433	Squeegee joint	1			
434	Squeegee holder	1			
435	M8X70 Hexagon socket screw	2			
436	M8X70 Outer hexagonal screw	2			
437	Big wheel cover	2			
438	Axle	1			
439	380 chassis	1			

Series product warranty card

Card number:

User name:

Contact number:

Contact address:

Post code:

Date of purchase:

Invoice number:

Product model:

Machine number:

Replacement parts:

Fault description:

Distributor (official seal)

1. This warranty card must be stamped with the official seal of the agent distributor to be valid.
2. This maintenance card is in duplicate, one for each customer and agent distributor.

*Warranty with purchase receipt, thank you for your cooperation!

Series product warranty card

Card number:

User name:

Contact number:

Contact address:

Post code:

Date of purchase:

Invoice number:

Product model:

Machine number:

Replacement parts:

Fault description:

Distributor (official seal)

3. This warranty card must be stamped with the official seal of the agent distributor to be valid.
4. This maintenance card is in duplicate, one for each customer and agent distributor.

*Warranty with purchase receipt, thank you for your cooperation!



ARCORA 380BM/25L (BATTERY TYPE) Floor Scrubber