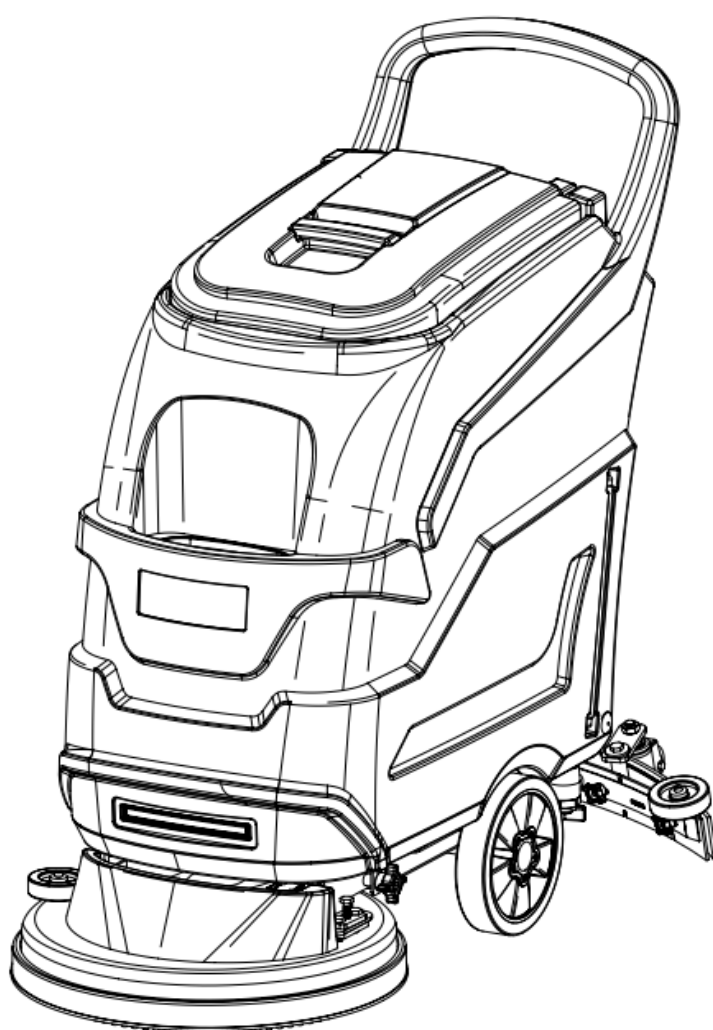


# ARCORA SCR 430BM (BATTERY TYPE)

Manual of Walk-Behind Floor Scrubber Machine

**ARCORA**<sup>®</sup>  
[www.arcora-group.com](http://www.arcora-group.com)

---



Please read this user manual before use

## 1.0 Overview



Notice: Please read this manual carefully before operating the ARCORA SCR 430BM floor scrubber.

### Preface

The SC4500 hand-push automatic floor scrubber uses the mechanical movement of a disc brush and the chemical action of water and detergent solutions. It can be used to clean hard floors with various stains, and collects the removed stains and unused floor scrubbers while doing so. The floor absorbs the detergent solution from the machine.

### Use

The scientific name of this machine is a hand-push fully automatic floor scrubber dryer. It is suitable for rapid mechanized floor cleaning in office buildings, hotels, restaurants, factories and workshops, etc., making cleaning operations more efficient and faster.

This device is not suitable for use in the rain or under a water cannon. It is strictly prohibited to use this equipment to collect hazardous dust or flammable liquids in flammable and explosive environments. In addition, the equipment is not suitable for use as a transportation vehicle.

## 2.0 Summary of safety issues



Note: Operators please read this manual carefully

- Before starting any work, be sure to familiarize yourself with all the design, controls, and functions of the floor scrubber.
- When using the floor scrubber for the first time, the operator should place it in an open area to learn its various functions.
- Before starting any operational work, check the condition of the scrubber and its parts under normal circumstances and during operation.
- If the floor washing machine is not working properly, the equipment cannot be used.
- The operator must operate this scrubber for the appropriate application (cleaning hard floors).
- When operating, pay attention to obstacles in the workplace, such as stairs, shelves, etc., and pay attention to the surrounding people, especially children.
- Use appropriate detergents (when using detergents with floor scrubbers, only use detergents in accordance with the detergent manufacturer's instructions, appropriate dosage and restrictions).
- Maintenance and repair of this floor scrubber should only be carried out by properly trained personnel using suitable tools.
- Turn off the power or remove the battery when cleaning or maintaining this floor washer.
- It is prohibited to use high-pressure water or steam equipment to clean this floor scrubber.
- Do not allow water to enter electrical components.



Note: It is prohibited to use this floor scrubber to clean flammable liquids, solvents, fuels, reactive metal vapors or flammable dusts.

### 3.0 Technical Parameters

ITEM	Specifications
Rated voltage	DC24V
Working width	450mm
Water absorption width	740mm
Work efficiency	1800 m <sup>2</sup> /h
Brush	450mm
Brush speed	150rpm
Brush motor	550W
Brush pressure	30kg
Water suction motor	500W
Vacuum degree	180mbar
Turning radius	500mm
Clean water tank capacity	37L
Sewage tank capacity	35L
Noise level	65dB
Battery	2×DC12V 80Ah
Battery weight	47 kg
Machine weight (excluding battery)	kg

## 4.0 Packaging and disassembly of the machine

4.1 Packing—The equipment comes in specific packaging with wooden pallets for easy forklift loading and unloading. Packaging dimensions are as follows: Long\_\_\_\_, Width\_\_\_\_, High\_\_\_\_\_.

4.2 Disassembly— (1) Tear off the wrapping film (2) Cut the packaging tape (3) Take away the packaging cardboard (4) Remove accessories (5) Use the ramp to slide the machine off the wooden pallet.

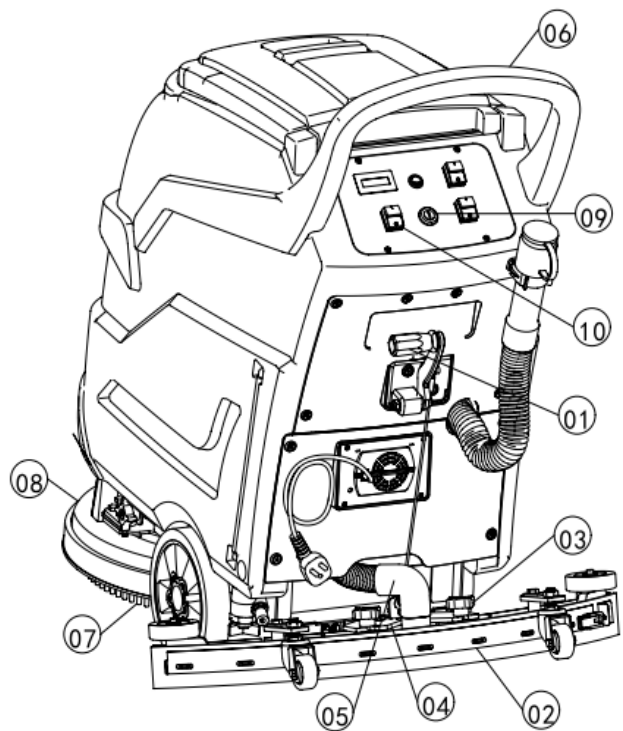
## 5.0 Assembly instructions

### 5.1 Assembly of squeegee

- Lift the handle of the squeegee lifting handle (01).
- Unscrew the two knobs (03) of the squeegee (02).
- Hang the squeegee on the fixed palm (04), and then tighten the two knobs.
- Connect the end of the suction hose (05) to the squeegee.

### 5.2 Installation of brush tray, scouring pad and needle holder

- Place the brush tray (07) or scouring pad and needle holder on the ground
- Grasp the handle (06) with your hands and push down to tilt the front of the machine. After pushing the machine to align the brush cover (08) with (07), let go and let the machine head press on the brush plate.
- Hold the handle (06) with your hand, turn on the power lock (09), press the "I" key of the brush tray motor switch (10), and move the machine slightly so that the brush tray will be installed automatically.



## 6.0 Operational preparations

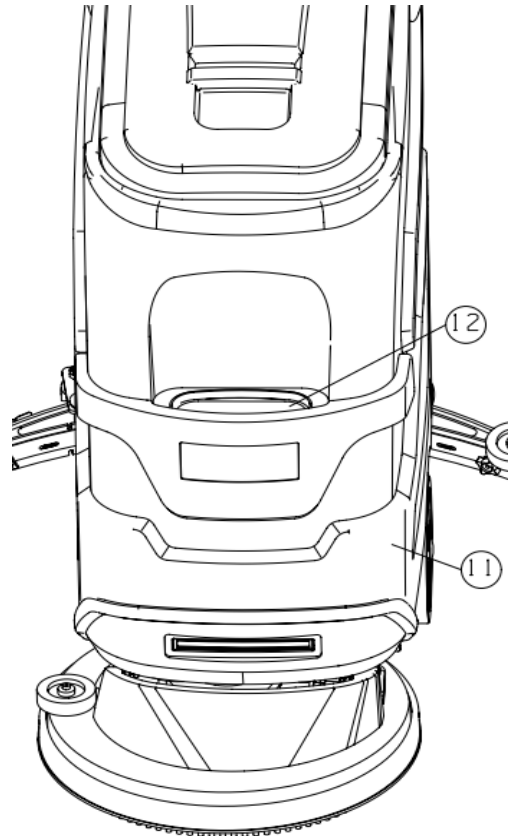
### 6.1 Select accessories

- Nylon brush: suitable for cleaning rough, irregular floors or smooth floors.
- Scouring Pad and Needle Brush: Suitable for flat polished floors.

### 6.2 Fill the clean water tank

- The front end of the clean water tank (11) of the floor washing machine is provided with a water injection port (12), which can directly inject water.
- Pour clean water and an appropriate amount of detergent into the clean water tank according to the stains on the floor.

- ✧ **Warning! If the detergent used produces too much foam, it means that the detergent is not suitable for use in automatic floor scrubbers. Please replace the detergent, otherwise the water suction motor will be burned.**

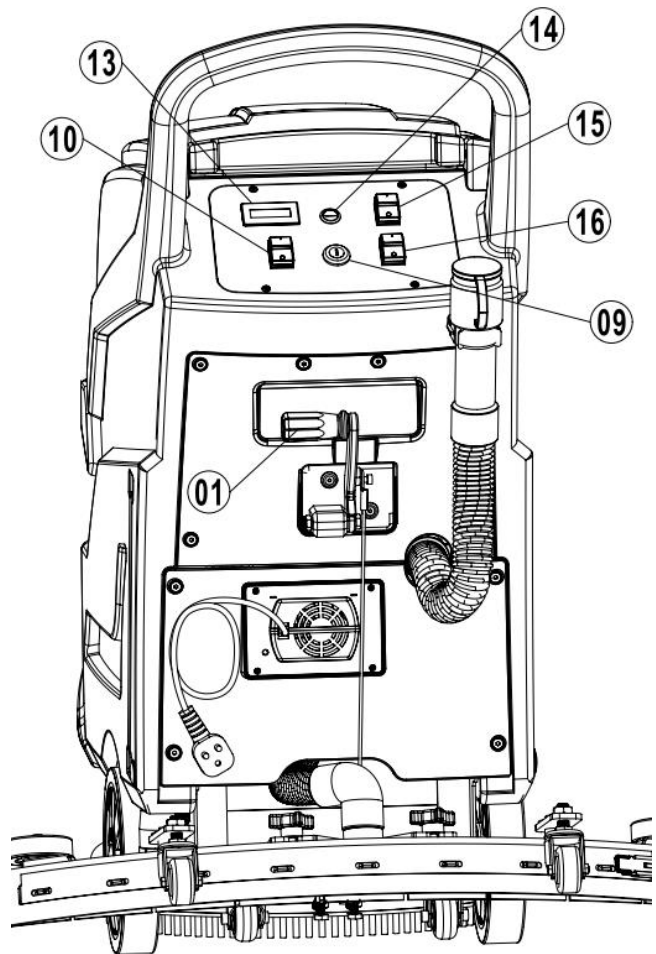


## 7.0 Control instructions

7.1 Instructions on the correct operating steps for starting up the machine

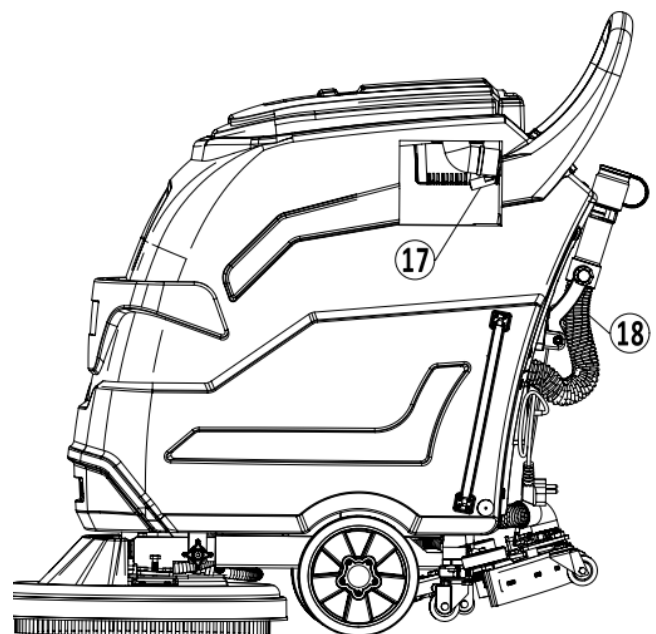
- Pull down the handle (01) to lower the squeegee to the ground.
- Observe and confirm or press the "O" button of the water suction motor switch (10) and the brush plate motor switch (16) to be in the "pressed" state to close.
- Use the key to turn on the power lock switch (09) clockwise. The battery meter lights up (13).
- Press the "I" button of switch No. (10) (14) (16) one after another and the machine will start normally.
- Adjust the water volume (15) according to actual needs.

☆**Special reminder: To maintain the normal service life of the battery, the battery must be fully charged in time after each use of the machine, regardless of how much battery power is used.**



7.3 Warning and operating instructions for full sewage tank

- When the sewage water level in the sewage tank reaches the highest limit level, the float (17) will float to the limit and then automatically shut down the motor.
- Immediately turn off the water suction motor and brush motor
- Raise the brush tray and squeegee
- Move the machine to the place where the sewage is discharged, remove the sewage hose (18) from the bracket clamp, pull out the pipe cover in the opposite direction from the person, and drain the sewage cleanly.



## 8.0 Common faults and solutions

### 8.1 Failure analysis and processing form

Fault	Cause Analysis	Solution
The machine cannot run	The power switch is not turned on	Please turn on the power switch
	The battery is low and needs to be recharged	Charge
	Battery damaged	Replace battery
	Battery wiring loose	Tighten the wiring
	The fuse is blown	Replace fuse
	The power switch is damaged	Contact the manufacturer
The brush motor cannot run	Brush plate motor overload fuse burned out	Replace fuse
	The brush motor is damaged or its wiring is damaged.	Contact the manufacturer
	The carbon brushes of the brush plate motor are seriously worn.	Contact the manufacturer
	Relay damaged	Contact the manufacturer
Water suction motor cannot operate	Water suction motor overload fuse burned out	Replace fuse
	The water suction motor or its wiring is damaged	Contact the manufacturer
	The carbon brushes of the water-absorbing motor are seriously worn	Contact the manufacturer
	Relay damaged	Contact the manufacturer
Little or no solution flow	Ball valve is opened too small or closed	Adjust flow switch
	The flow switch is adjusted too small or closed	Adjust flow switch
	The flow switch is adjusted too small or closed	Flush the water pipe or filter screen with clean water
	Water release solenoid valve is clogged	Disassemble the water solenoid valve and clean it
Poor water absorption	Sewage tank full	Draining the sewage tank
	The plug of the sewage pipe is loose	Tighten the drain pipe plug
	The wiper assembly is clogged	Clean wiper components
	Water wiper blade wear	Transfer or replace
	The scraper position is incorrect	Adjust the height of the scraper and the ground
	The suction pipe is not reliably	Reliably connect the suction

	connected to the wiper assembly	pipe
	Suction pipe blocked	Clear blockage
	Suction pipe damaged	Replace suction pipe
	The sewage tank cover is not closed properly	Cover well
	The sealing strip of the sewage tank cover is damaged	Replace the sealing strip
	Water suction motor is damaged	Contact the manufacturer
Short running time	Battery low	Charge
	The battery is damaged	Replace battery
	Battery needs maintenance	See battery maintenance
	Battery charger damaged	Repair or replace charger

## 9.0 Maintenance

### 9.1 Daily maintenance and upkeep

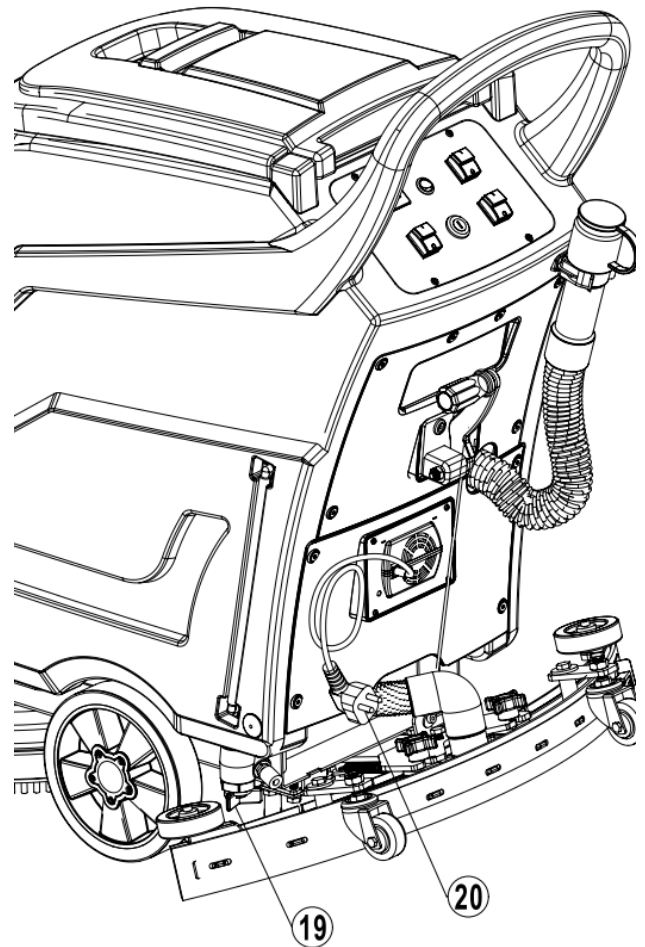
- (1) Remove the needle seat/brush tray and wipe clean with a specific cleaning agent.
- (2) Drain the sewage tank and rinse with clean water. Check for debris in the sewage tank and remove it immediately if any. In addition, the remaining solvent in the clean water tank must also be drained. [Unscrew the clean water drain plug (19) to drain]
- (3) Lift the wiper assembly off the ground and wipe the wiper strip with a wet towel.
- (4) Remove the vacuum suction filter device and rinse it with clean water.
- (5) Wipe the machine clean with a specific cleaner.
- (6) Charge the battery. **【Charging plug (20)】**
- (7) Check whether the edge of the scraper is sharp. If it is damaged, please turn it around or replace it.

### 9.2 Monthly maintenance and upkeep

- (1) Check that the top of the battery is clean to prevent corrosion.
- (2) Check whether the battery cable is loose or corroded.
- (3) Check the sealing strip of the sewage tank cover and replace it if it is damaged.
- (4) Lubricate all lubricated parts and rotating parts with specific lubricant axis.
- (5) Check whether machine fasteners are loose.
- (6) Check the water tank for leaks.

### 9.4 Battery maintenance

- (1) Please follow the battery charging chapter in each manufacturer's operating manual for maintenance.
- (2) The top of the battery and the electrodes must be anti-corrosive. Soda water can be used to prevent corrosion. Do not allow this solution to enter the battery.
- (3) Use a brush dipped in soda water to wipe the battery and battery cables.
- (4) Regularly check whether the battery cable is worn and whether the contacts are loose, and replace it if necessary.



### 9.3 Motor maintenance

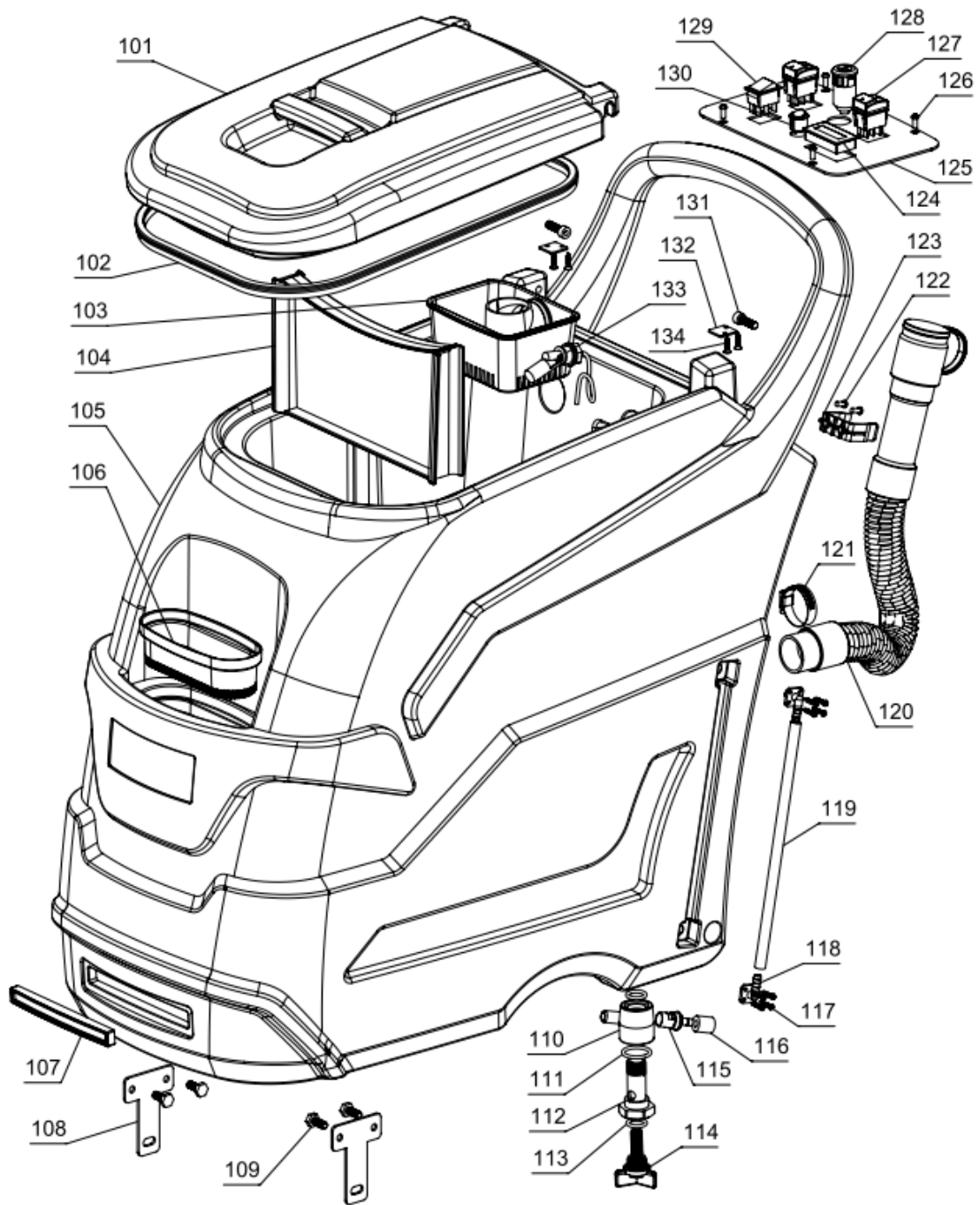
- (1) For motor maintenance, please contact the automatic floor scrubber manufacturer.
- (2) The motor carbon brushes should be inspected after every 250 hours of use. If the carbon brush is severely worn, please contact the manufacturer for replacement.

## 9.5 Machine storage

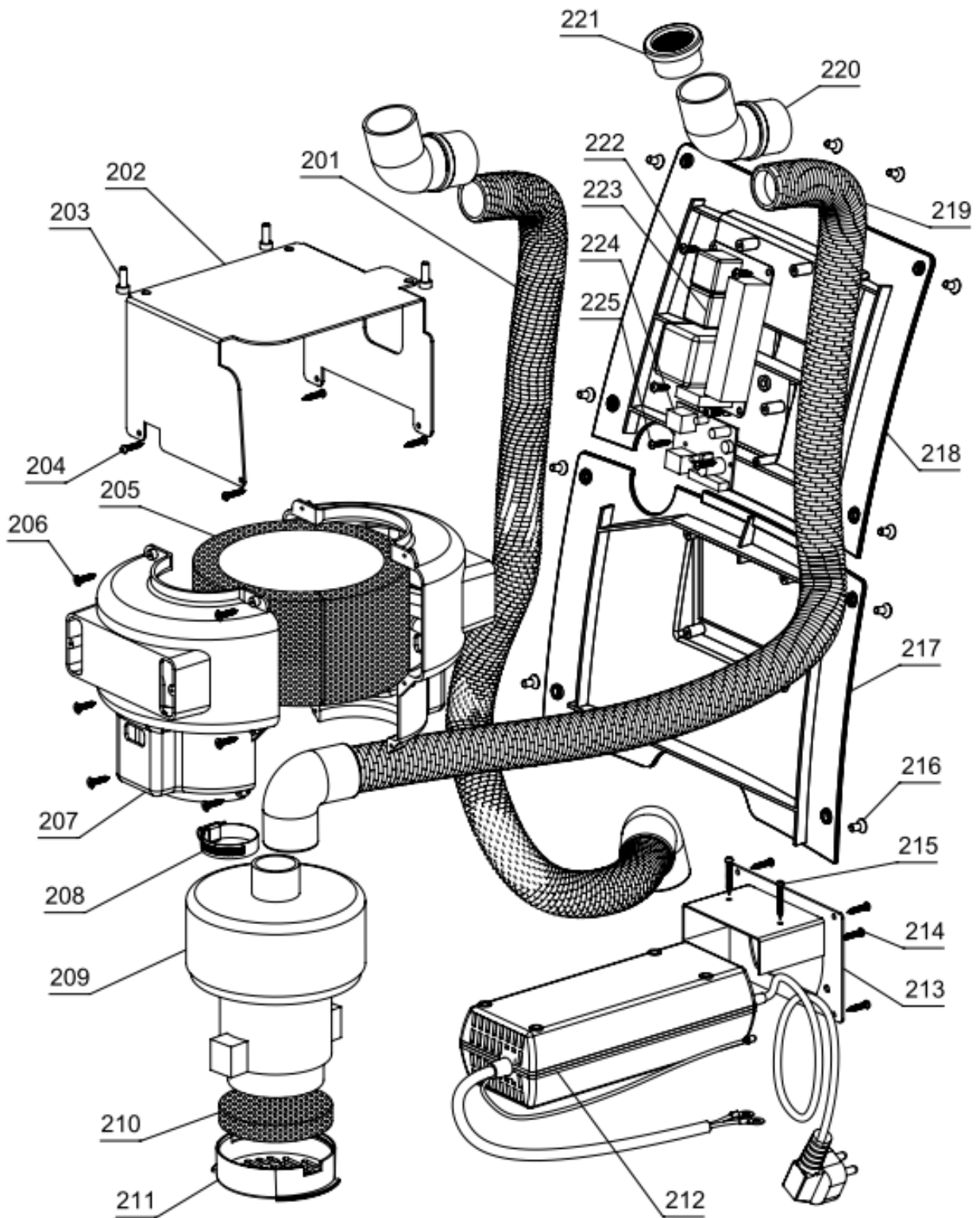
- (1) Store indoors in a dry place.
- (2) Store upright.
- (3) Lift the brush tray off the ground.
- (4) Lift the wiper assembly off the ground.
- (5) If the storage location is extremely cold, you need to keep the machine completely dry before storing it to avoid damage caused by low temperatures.
- (6) Drain the recovery and solution tanks.

## 10.0 Exploded view

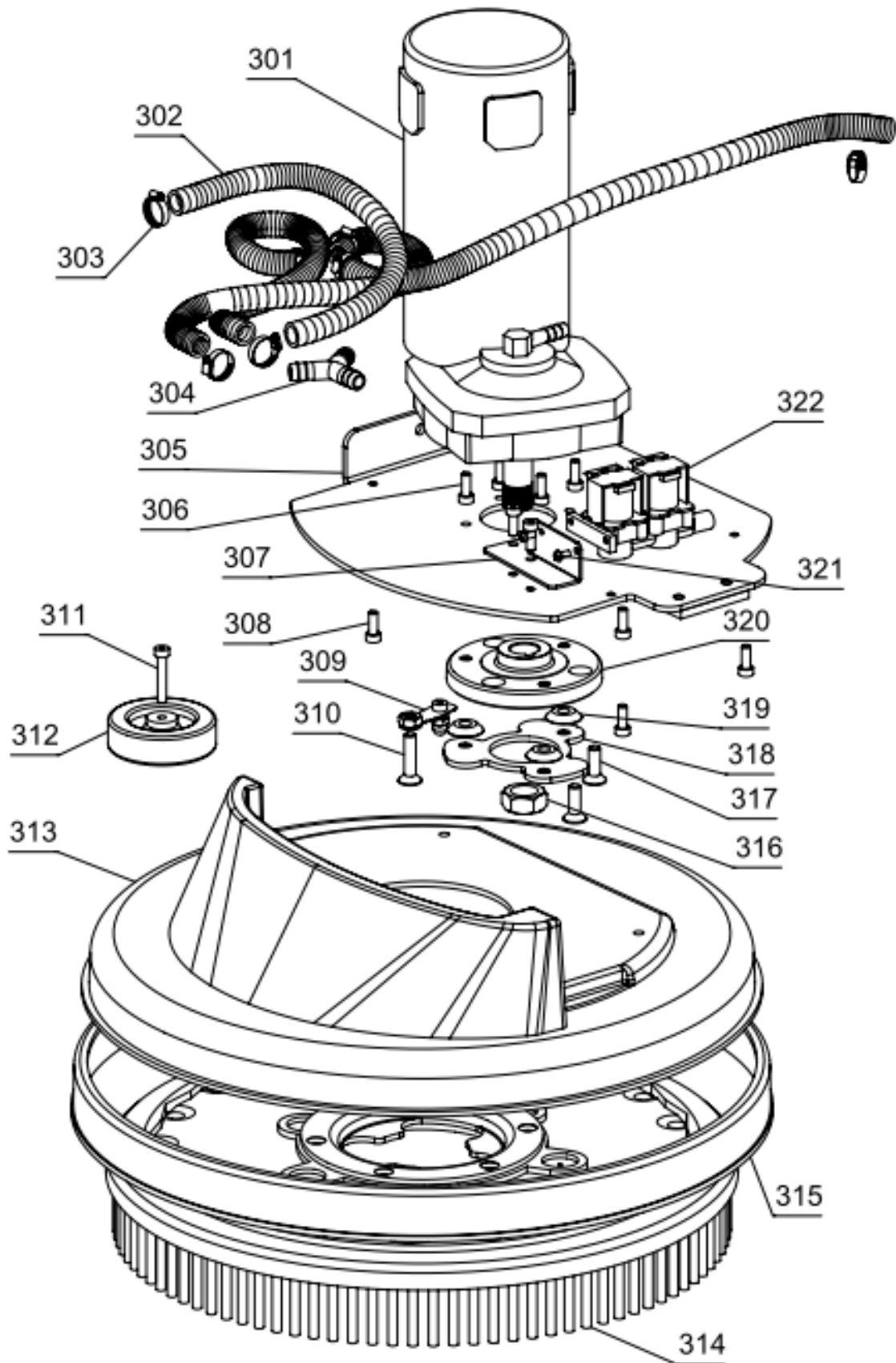
Exploded view 1



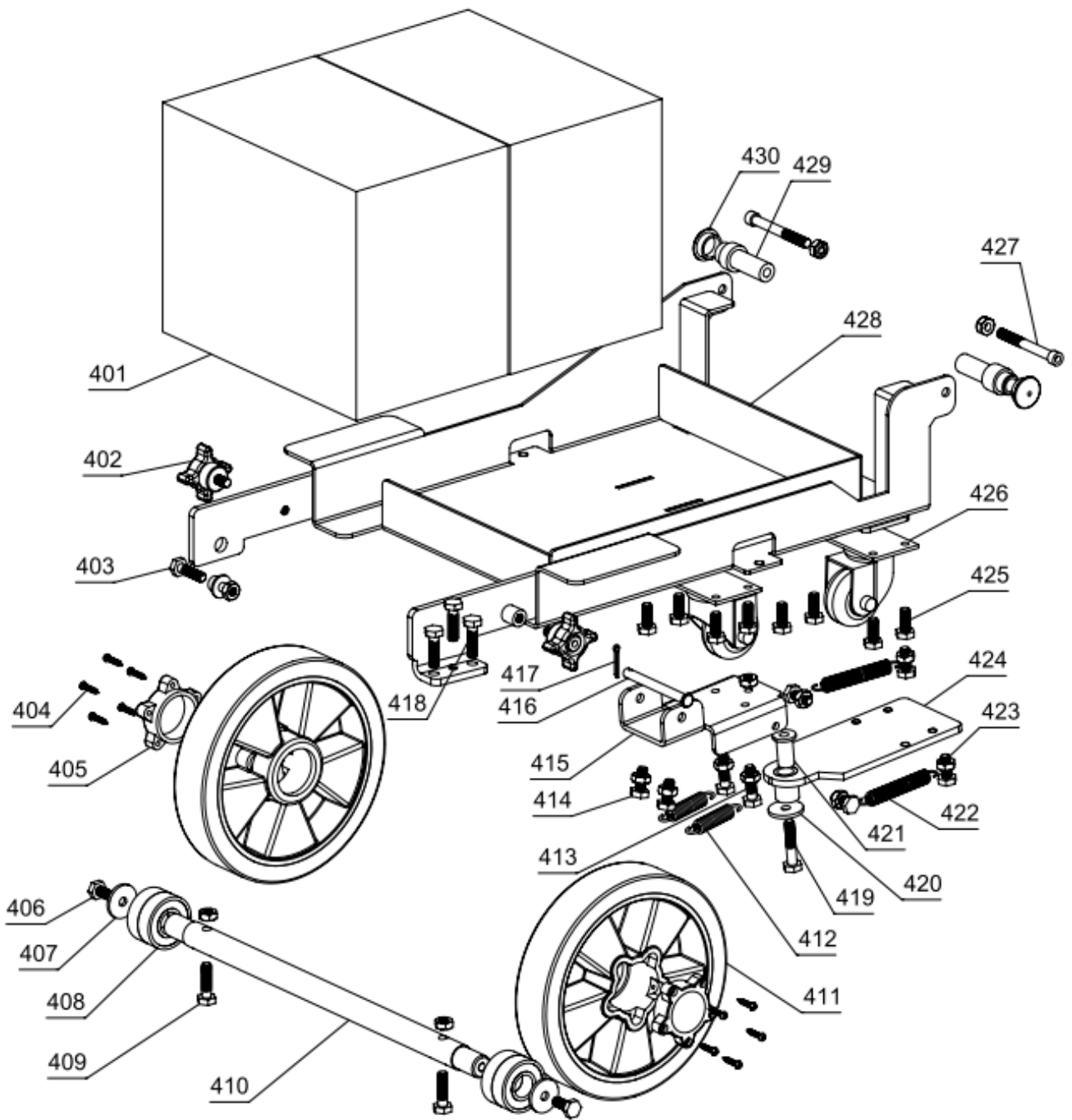
Exploded view 2



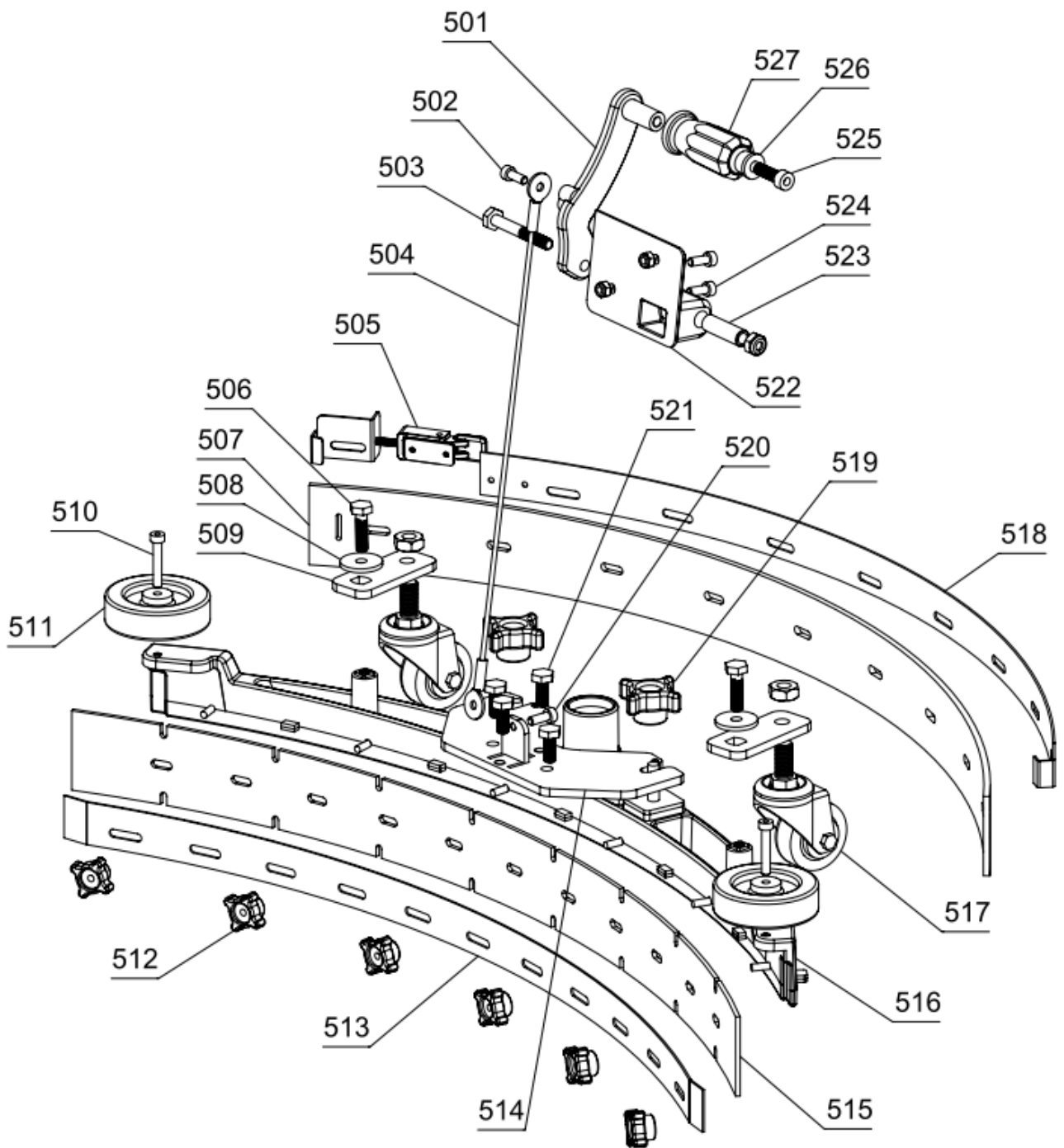
Exploded view 3



Exploded view 4



Exploded view 5



## Exploded chart list

Number	Name	Quantity	Remark
101	Water tank cover	1	
102	Sealing rubber strip	1	
103	Drain basket	1	
104	Water tank partition	1	
105	Water tank	1	
106	Clean water filter cover	1	
107	LED light	1	
108	T-shaped connector	2	
109	M8X20 Hexagon Screw	4	
110	Water valve housing	1	
111	34X3.5"O"Ring	1	
112	Water valve fasteners	1	
113	24X3.5"O"Ring	2	
114	Water valve filter element	1	
115	Water valve core	1	
116	Water valve knob	1	
117	4X20 Pan head self-tapping screws	8	
118	Water gauge elbow faucet	2	
119	14X10 Transparent hose	1	
120	Sewage pipe	1	
121	27-51 Hose clamp	1	
122	M5X20 Pan head screws	2	
123	Pipe clamp	1	
124	Electricity meter	1	
125	Control panel	1	
126	M5X16 Pan head screws	4	
127	Button	2	
128	Power lock	1	
129	Water volume switch	1	
130	Water release switch	1	
131	M8X25 Cup head screws	2	
132	Water tank cover pressing	2	
133	Electronic induction float	1	
134	4X20 Pan head self-tapping screws	4	
201	Telescopic suction pipe	1	
202	Water absorbing motor bracket	1	
203	M6X16 Cylindrical head hexagon socket screws	3	
204	4X20 Pan head self-tapping screws	4	
205	Silence sponge	1	
206	M6X16 Countersunk head self-tapping screws	6	

207	Silencer box	2	
208	27-51 Hose clamp	1	
209	Water suction motor	1	
210	Dust sponge	1	
211	Dust cover	1	
212	Charger	1	
213	Charger mounting bracket	1	
214	4X20 Pan head self-tapping screws	4	
215	4X30 Pan head self-tapping screws	2	
216	M6X16 Countersunk head screws	10	
217	Charger fixing plate	1	
218	Handle fixing plate	1	
219	Exhaust tube	1	
220	45 degree elbow	2	
221	Net cover	1	
222	5X16 Pan head self-tapping screws	4	
223	Relay integrated board	1	
224	Circuit board	1	
225	4X20 Pan head self-tapping screws	2	
301	Brush motor	1	
302	Water pipe	4	
303	13-20 Hose clamp	7	
304	Three-pronged water spout	1	
305	Water tray motor tray	1	
306	M6X16 Cylindrical head hexagon socket screws	6	
307	Solenoid valve positioning parts	1	
308	M6X16 Cylindrical head hexagon socket screws	4	
309	Squeegee anti-falling buckle	1	
310	M8X30 Countersunk head screws	1	
311	M6X3 Cylindrical head hexagon socket screws	1	
312	Side wheel	1	
313	Brush cover	1	
314	Brush disk	1	
315	Water deflector	1	
316	M20X1.5 nut	1	
317	M8X25 Countersunk head screws	2	
318	Trilobal blade	1	
319	Slope meson	3	
320	Transmission buckle aluminum disc	1	
321	M4X10 Pan head screws	2	
322	Three-way solenoid valve	1	
401	12V-70aH battery	2	

402	M8 Star head screw	2	
403	M8X30 External hexagonal screw	1	
404	4X20 Pan head self-tapping screws	10	
405	Bearing cap	2	
406	M8X20 External hexagonal screw	2	
407	30X8X3 meson	2	
408	6204 Bearing	4	
409	M8X35 External hexagonal screw	2	
410	Axle	1	
411	8 inch wheels	2	
412	13X2X62 Tension spring	2	
413	M8X30 External hexagonal screw	2	
414	M8X20 External hexagonal screw	2	
415	Squeegee lifting hinge	1	
416	8X80 Flat head pin with hole	1	
417	3# cotter pin	1	
418	M8X30 External hexagonal screw	3	
419	M8X40 External hexagonal screw	1	
420	30X8X3 meson	1	
421	Squeegee swing piece bushing	1	
422	Squeegee reset spring	2	
423	M8X20 External hexagonal screw	4	
424	Squeegee swing piece	1	
425	M8X20 External hexagonal screw	8	
426	2 inch universal wheel	2	
427	M8X76 Cylindrical head hexagon socket screws	2	
428	Chassis	1	
429	Water tank bushing	2	
430	Water tank sleeve cover	2	
501	Squeegee lift handle	1	
502	M6X20 Cylindrical head hexagon socket screws	1	
503	M8X60 External hexagonal screw	1	
504	Scraper cable	1	
505	Pressure plate buckle assembly	1	
506	M8X25 External hexagonal screw	2	
507	Squeegee rear rubber strip	1	
508	30X8X3 meson	5	
509	Adjust wheel support plate	2	
510	M6X35 Cylindrical head hexagon socket screws	2	
511	Squeegee wheel	2	
512	M6 Star nut	6	
513	Squeegee front pressure plate	1	

514	Squeegee fixed palm	1	
515	Squeegee front strip	1	
516	Squeegee main frame	1	
517	Squeegee height adjustment wheel	2	
518	Squeegee rear pressure plate	1	
519	M8 Star nut	2	
520	M6X25 Cylindrical head hexagon socket screws	1	
521	M8X20 External hexagonal screw	4	
522	Lifting handle fixing bracket	1	
523	Lift handle sleeve	1	
524	M6X16 Cylindrical head hexagon socket screws	2	
525	M8X25 Cylindrical head hexagon socket screws	1	
526	Lifting handle glove accessories	1	
527	Lifting handle gloves	1	

Series product warranty card

Card number:

Name:

Contact number:

Address:

Zip code:

Purchase date:

Invoice number:

Product model:

Airframe number:

Replacement accessories:

Fault description:

Distributor (official seal)

1. This maintenance card must be stamped with the official seal of the agent distributor to be valid.
2. This maintenance card is made in two copies, one each for the customer and the agent distributor.

★Warranty with purchase receipt, thank you for your cooperation!

Series product warranty card Number of this card:

User name: Contact number:

contact address:

Postcode:

Purchase date: Invoice number:

Product model: Body number:

Replacement accessories:

Fault description:

Distributor (official seal)

- 1. This warranty card must be affixed with the official seal of the agent distributor to be valid
  - 2. This warranty card is in duplicate, one for the customer and one for each distributor.
- Warranty with purchase bills, thank you for your cooperation!

ARCORA INTERNATIONAL GMBH  
 Marssstraße 9, 85609 Aschheim near Munich  
 Tel. +49(0)89 14 33 29 30  
 arcora-group.com

Fax. +49(0)89 14 33 29 329  
 info@arcora.de

www.